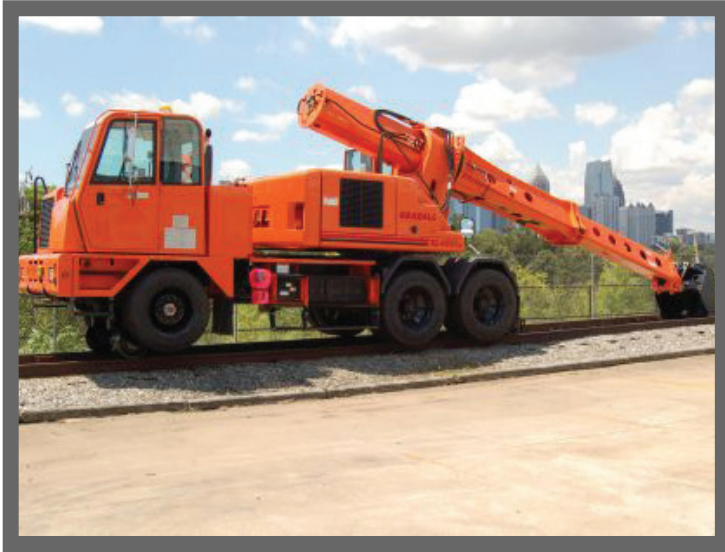


MODEL RW1630/50G



MODEL RW1630/50G

Capacity

- Front and rear axles are rated at 40,000 lbs per railgear axle at 20 mph.

Gauge

- 56-1/2 inch standard. Alternative gauge widths available as an option.

Front Gear

- RW1630 single axle with two 16 inch wheels attached to vehicle front suspension.
- 10 inch ground clearance in highway mode.
- 2 inch tire clearance above the top of the rail in rail position.
- Integral steering wheel lock.
- Mechanical safety pin-offs in highway mode.
- Over-center design in rail mode.

Rear Gear

- RW1650 single axle with two 16 inch wheels.
- Attached to the rear frame.
- 10 inch ground clearance in highway mode.
- Mechanical pin-offs in both rail and highway modes.

Axle

- 3-1/4 inch diameter, 110,000 psi yield with 5 inch tapered roller bearings.

Brakes

- External Cobra brakes (air-activated)

Supported Equipment

Gradal 3100/4130XL/5130XL

Contact DMF for alternate chassis consideration

****Check with DMF prior to equipment selection.***

Family Owned since 1972
Made in the USA



DMF

People You Know

Quality You Trust

Service You Value

MODEL RW1630/50G

FEATURES

The **DMF RW1630/50G** is a unique railgear designed for a unique machine. The Gradall Rough Terrain series allows for highway travel and railroad capability in one machine. The front railgear is our standard RW1630 truck mounted gear modified for this application. The rear is a RW1650G assembly which incorporates the gear into a tight, bulkhead mounted package. This is a perfect application for your short track time needs.



Innovate



Manufacture



On Time Delivery



Support



People You Know, Quality You Trust, Service You Value

Our team has over 300 years of experience bringing innovation, maintenance and training to keep our clients on track.

665 Pylant Street NE, Atlanta, GA 30306 | PH 404.875.1512 | FX 404.875.4835

E-mail sales@dmfatlanta.com | www.dmfatlanta.com